

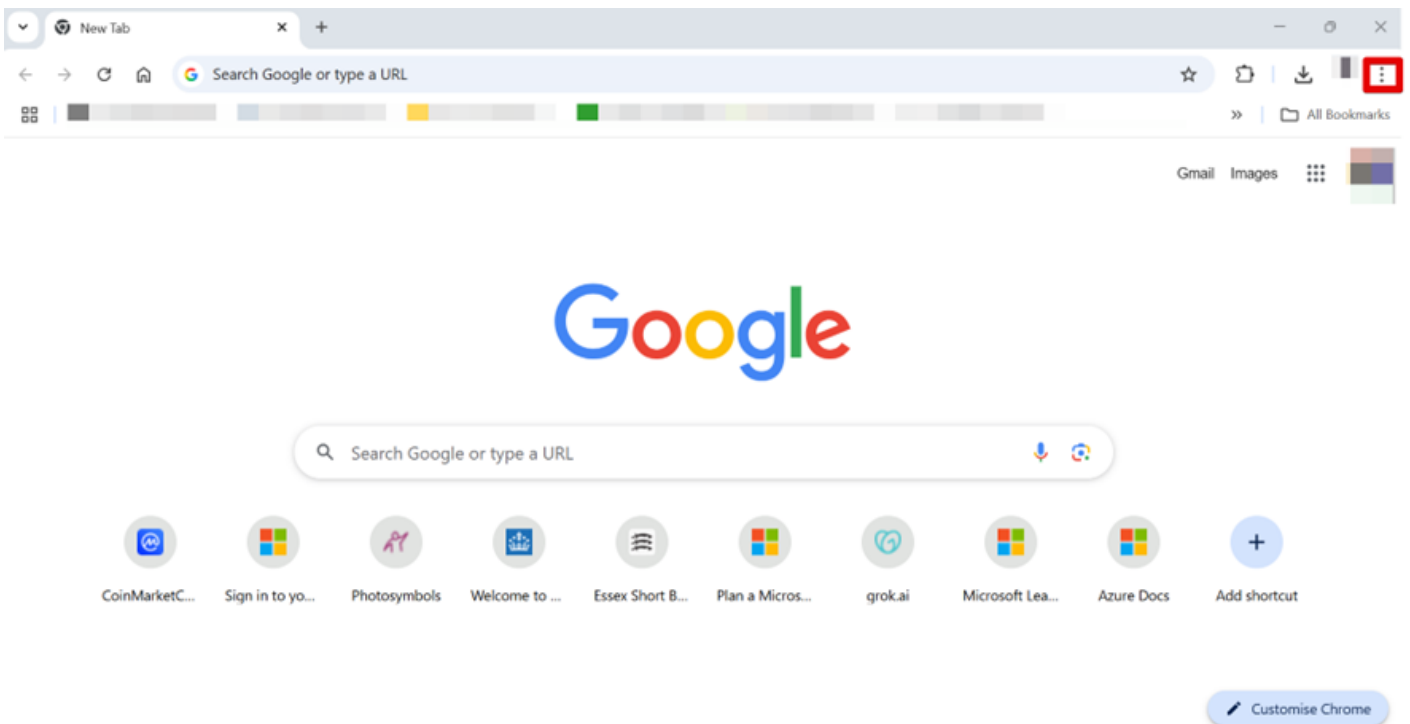
# HOW TO: Export & Import Chrome Browser Passwords

Field	Details
Document Type	How-To Guide - Export & Import Chrome Browser Passwords Runbook
Applies To	Browser
Audience	End-users
Author	AK. Udofeh
Last Updated	September 2025

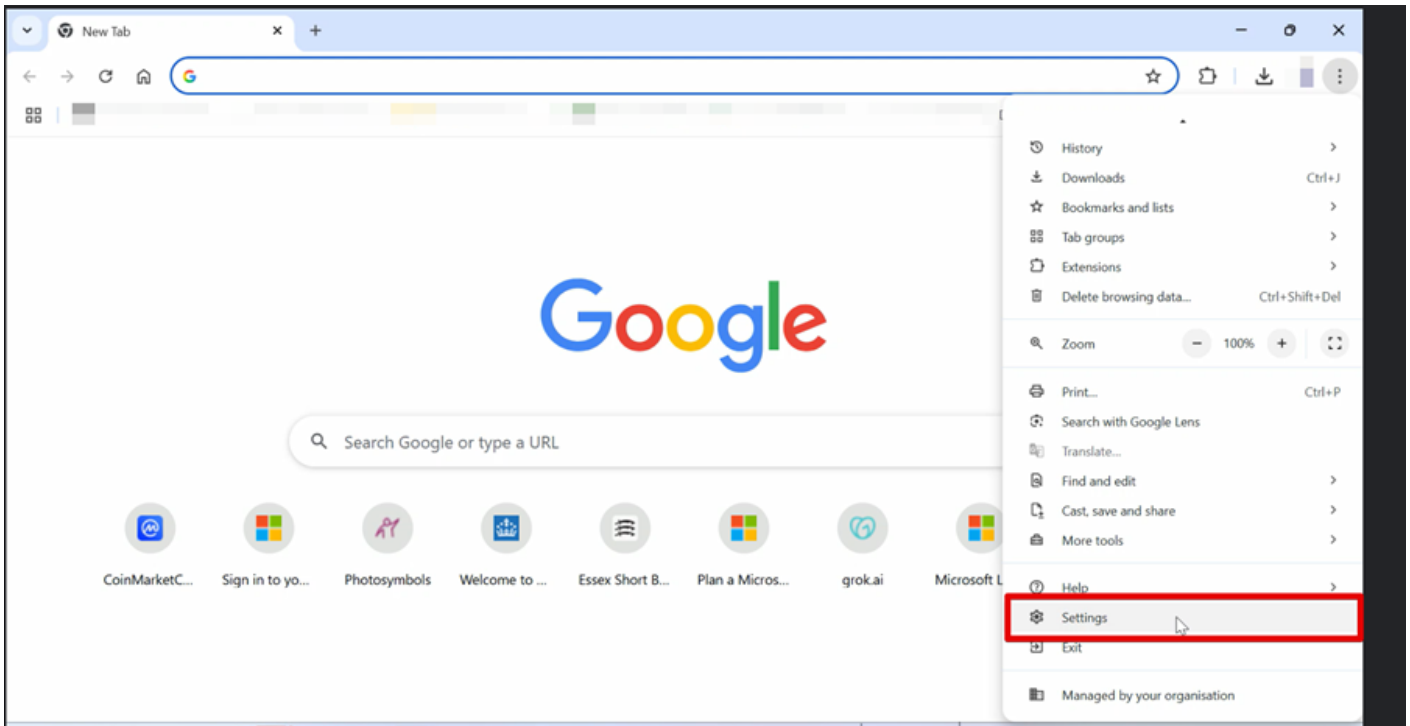
## Overview

This document outlines steps to export and import your Chrome browser passwords (the passwords that you've saved in your Chrome browser) before joining your device to Entra ID (Azure AD) or before you switch to a new device.

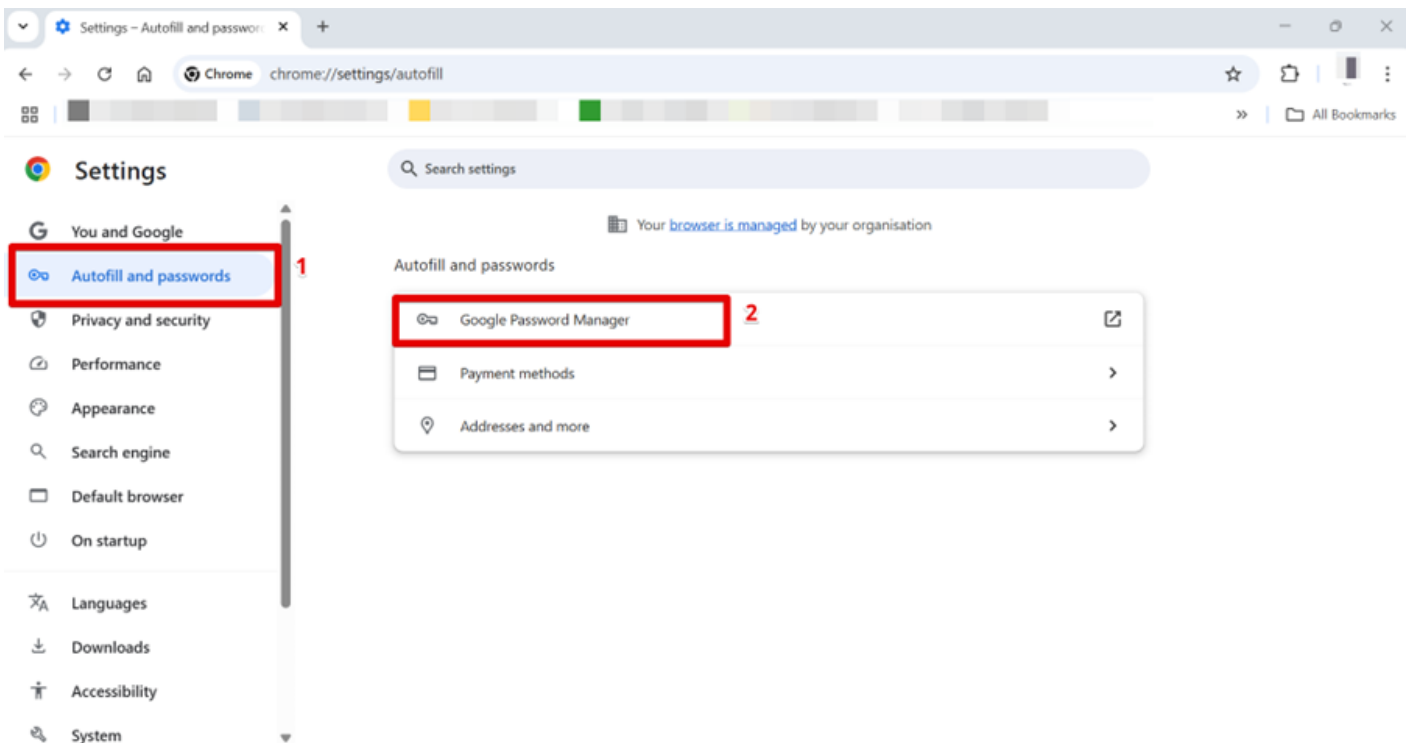
### Step 1: Click the three-dot ... menu (top right).



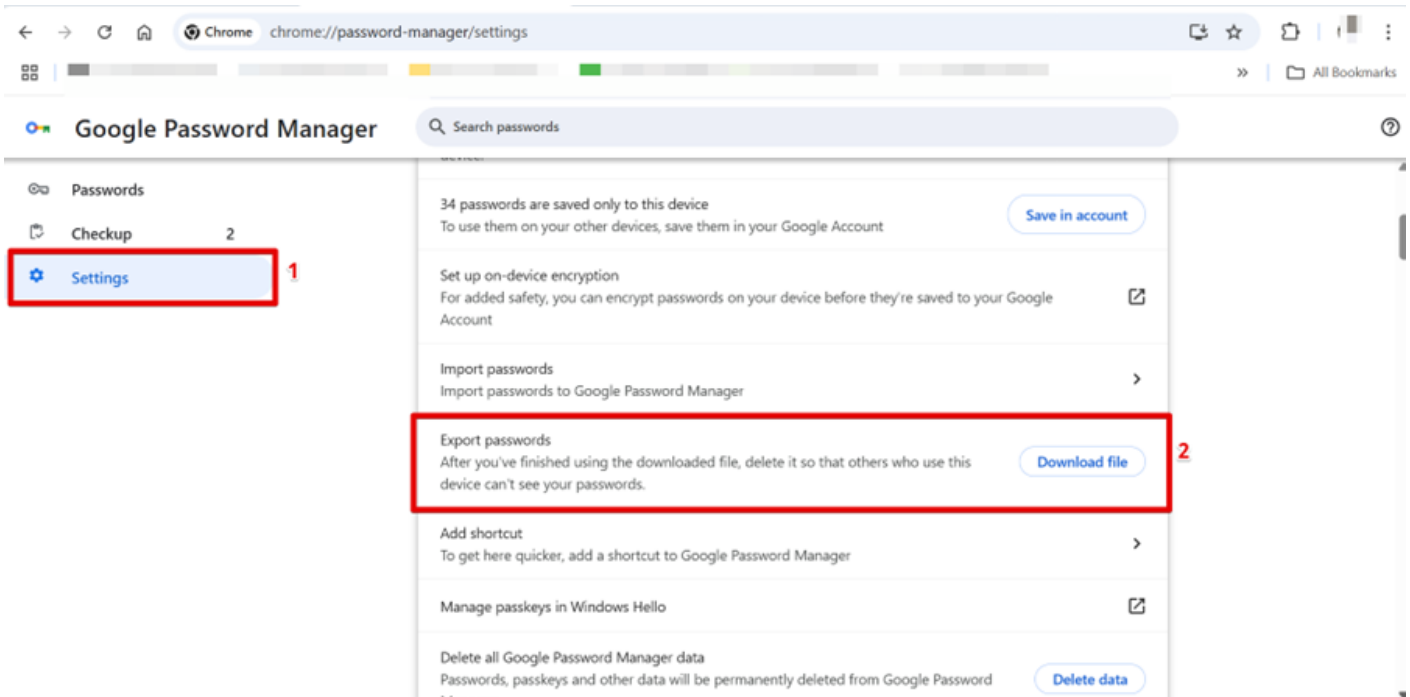
### Step 2: Open Chrome > Settings.



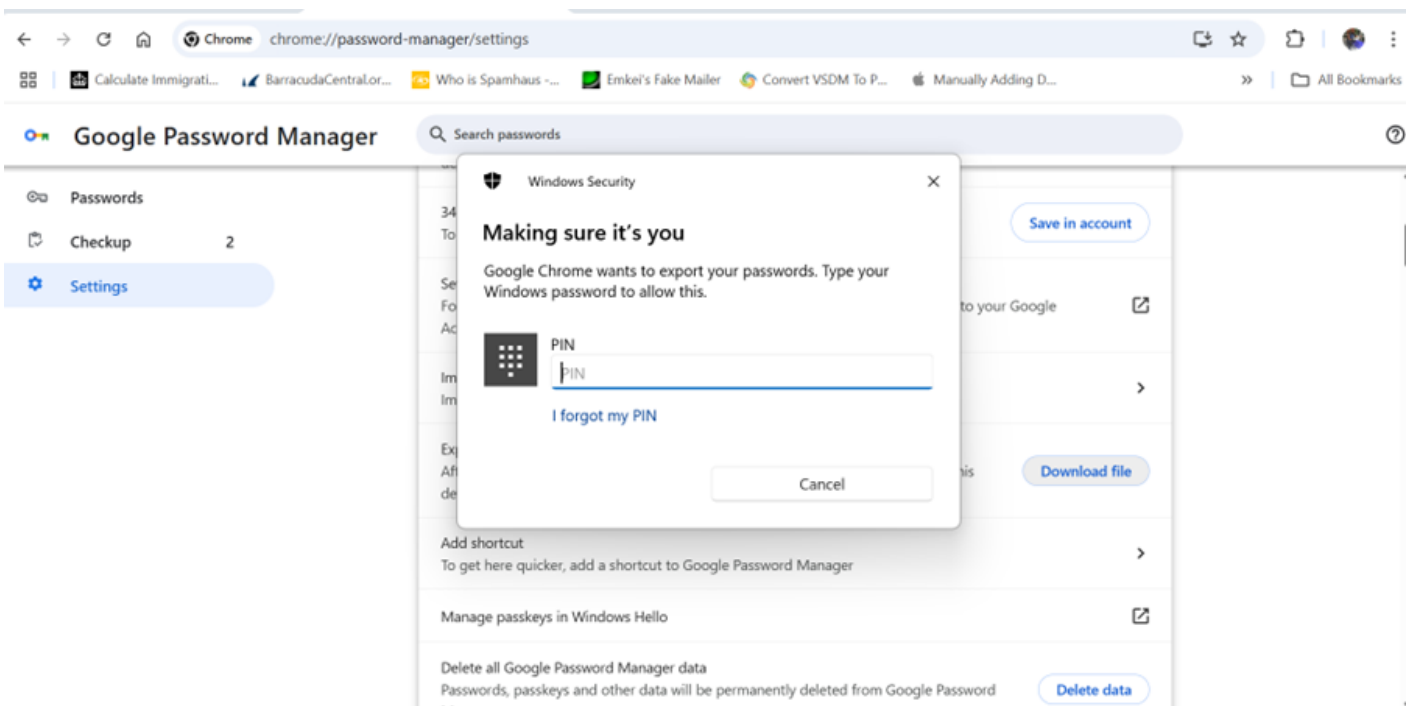
**Step 3: Click “Autofill & passwords” > “Google Password Manager”.**



**Step 4: Click “Settings” > scroll down to “Export passwords” and click on “Download file”.**



**Step 5: Confirm with your Windows sign-in or account password > save the .csv. (You may want to save it in OneDrive or Box)**



## HOW TO: Import or Restore Chrome Browser Passwords

**Step 1:** Open Chrome.

**Step 2:** Go to the three-dot ... > Settings > Autofill and Passwords > Google Password Manager

> **Settings (at the left-hand pane).**

**Step 3:** In the “**Import password**” option click “**Select file**”.

**Step 4:** Select the  password file you exported earlier.

**Step 5:** Click **Open**.

**Step 6:** Your passwords will now be available in Chrome.

.csv is unencrypted. Handle carefully and delete after use.

---

Revision #1

Created 2026-03-13 12:28:06 UTC by AK. Udofeh

Updated 2026-03-25 08:59:15 UTC by AK. Udofeh